

THE  
PHYSICAL DISABILITY  
COUNCIL OF NSW  
ANNUAL REPORT



2012-2013

# PHYSICAL DISABILITY COUNCIL OF NSW

## ORGANISATION PROFILE

The Physical Disability Council of NSW is the peak body representing people with physical disability across New South Wales. PDCN is a not-for-profit, non-government organisation.

### MEMBERSHIP

Individual membership of PDCN includes people with a range of physical disability issues, from young children and their representatives to aged people. Members live across New South Wales, from the Greater Sydney Metropolitan area to rural NSW, and are from a wide range of socioeconomic circumstances.

Organisational membership includes community organisations, human service providers and other organisations who have a commitment to people who have physical disability and to the work of PDCN.

### GOAL

As an organisation we want to grow the financial and non-financial capacity of PDCN to represent people experiencing physical disability.

### VISION

As people living with physical disability we strive to ensure that our human rights are protected, our equality of opportunity is assured and our full participation is a reality.

### MISSION

Using a community development approach, we will...

- 1 Educate, inform and assist people experiencing physical disability to access services.
- 2 Develop the capacity of people living with physical disability to advocate for themselves.
- 3 Educate and inform stakeholders about the needs of people living with physical disability.

### VALUES

As we implement our vision, we will be guided by our values...

**Integrity**  
**Inclusion**  
**Independence**  
**Commitment**  
**Communication**

## CONTACT PDCN

St Helen's Community Centre  
3/184 Glebe Point Rd. Glebe 2037

T: (02) 9552 1606  
1800 688 831 (freecall outside  
the Sydney metropolitan area)  
E: Admin@pdcnsw.org.au  
F: (02) 9552 4644

National Relay Service

TTY users:  
133 677 then ask  
for (02) 9552 1606

Speak and Listen users:  
1300 555 727 then ask  
for (02) 9552-1606

# CONTENTS

---

## ORGANISATION PROFILE

PDCN

02

## OBJECT 3

To educate and inform stakeholders about the needs of people with physical disability.

12

## REPORT

Report from the President and Executive Officer.

06

## GOVERNANCE

18

## OBJECT 1

To educate, inform and assist people with physical disabilities in NSW about the range of services, structure and programs available.

08

## APPENDIX A

The Convention on the Rights of Persons with Disabilities (CRPD)

22

## OBJECT 2

To develop the capacity of people with physical disability in NSW to advocate for themselves.

10

## APPENDIX B

Financial Reports for 2012-2013

23

# 2012-2013 has been a proactive year, with significant achievements.

## WE HAVE

Worked collaboratively with others to bring a stronger message to stakeholders and the broader community about:

- The impact of increasing electricity prices on the lives of people with physical disability by providing input to the publication More Power to You: electricity and people with physical disability.
- Person centred approaches, individual choice, and control in the lives of people with disability, through the development of a disability support organisation in the Hunter area.
- The financial impacts of the Taxi Transport Subsidy Scheme.

## WE HAVE

Utilised skills of volunteers to a greater extent to progress the work of PDCN, in the areas of community development, mentoring and community consultations.

## WE HAVE

Strengthened PDCN's role in developing the capacity of people with physical disability to have more control over their own lives:

- A finalist for an award for the Emergency Readiness and Response Workshops that PDCN developed and facilitated.
- Facilitated the mentoring initiative Mentors Matter for students with physical disability.

## WE HAVE

Strengthened the capacity of people who work with individuals who have physical disability:

- Redeveloped, and co-facilitated workshops for people who work with individuals who have dementia and physical disability.
- Facilitated workshops for volunteers and employees of Willoughby City Council.

# We Have. We do.



# CONTRIBUTORS

THANK YOU TO ALL WHO HAVE SUPPORTED THE WORK OF PDCN DURING 2012-13

---

## FINANCIAL SUPPORT

### **Department of Family and Community Services, Ageing, Disability and Home Care**

for a financial grant for peak organisation related activities,  
and a also a one-off grant related to development and  
delivery of education related to people with dementia  
and physical disability

### **Council of the City of Sydney**

for support through their Accommodation Grants program

## IN-KIND SUPPORT

### **Committee of Management:**

Names and roles are listed on the right

### **PDCN information stalls at Expos:**

Ann-Mason Furmage, Anne Stratton, Kevin Finlayson, Peter  
Simpson, Caroline Daley

### **Mentors Matter Program:**

Andrew Longhurst, Peter Simpson, Ya'el Frisch, Oliver  
Morton-Evans, Sophie Marmont, David Brazel

### **PDCN representative at various Forum:**

Ann-Mason Furmage

### **PDCN Community Consultations:**

Kevin Finlayson

### **Education:**

Wendy Potter and Ann-Mason Furmage

### **PDCN office support:**

Hayley Brooks, Christine Hannan, Kristie Brown,  
Luke Morris

### **AGM in 2012:**

Bill McKee, Kristie Brown, Sara Coutinho

## COMMITTEE OF MANAGEMENT

(as at 30.06.13)

### **Kevin Finlayson**

President and Public Officer

### **Andrew Longhurst**

Vice President

### **Ann-Mason Furmage**

Treasurer

### **Peter Simpson**

Secretary

### **Ya'el Frisch**

Member

### **Caroline Daley**

Member

### **Melinda Paterson**

Member

## EMPLOYEES

### **Ruth Robinson**

Executive Officer

### **Lachlan Hazelton**

Communication and Education Officer

### **Jordana Goodman**

Policy Officer

### **Alison Vella**

Accounts and Membership Officer

## CONTRACTED SERVICES

### **IT team**

Computer support from 'Bootstrap'

### **David Fearnley**

Auditing services from 'DA Fearnley & Co'

### **Diana Orr**

MYOB support

### **Colin Slattery**

Governance education from *Semann and Slattery*



# REPORT

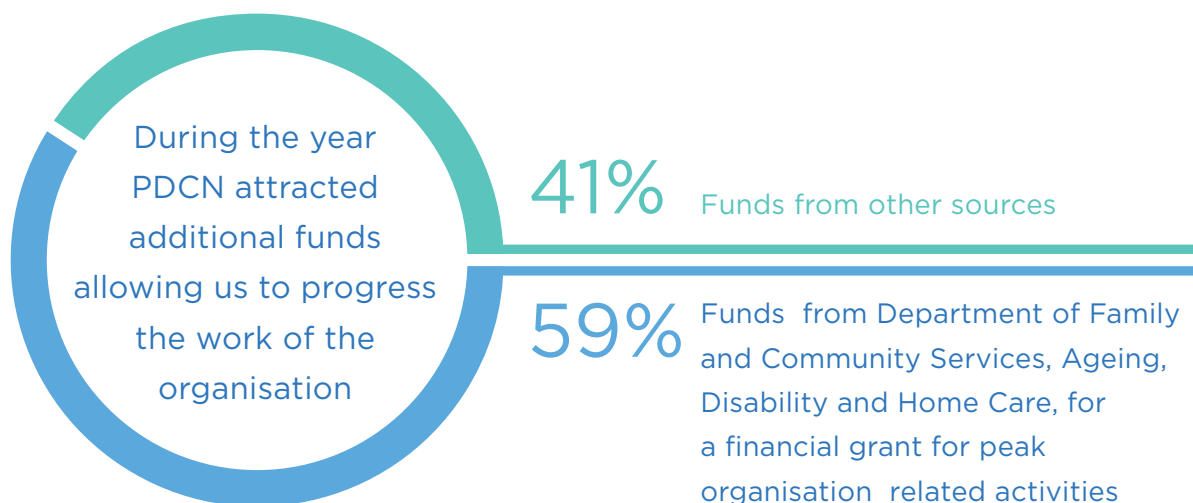
## FROM THE PRESIDENT

---

I attended the Disability Expo in Newcastle in May, and could sense the excitement amongst people with disabilities to be part of the NDIS launch in July 2013. In real terms this is a big reform in the disability sector, and it will be interesting to see it evolve in the Newcastle and Hunter region.

PDCN continues to be recognised as an effective peak organisation, and this has been reflected in meetings held throughout the year with both state and federal Ministers, and Members of Parliament.

PDCN works hard to inform people about PDCN and its work. One of the ways we do this is by providing information to people at Expos. During this financial year PDCN operated an information stall at five expos. They were held in Penrith, Sydney Central Railway Station, Cardiff, Newcastle and Rose Hill. I helped out at four of these expos, and found it really valuable to spend time communicating with the general public.



I would like to thank my fellow Committee of Management members for their support during the year, especially as I have only been president since last November. I attended a three day governance workshop after my election as President and found it very valuable to me. PDCN committee members received governance training in February 2013. Thanks also to the Executive Officer for her assistance and support

**KEVIN FINLAYSON** - President

# REPORT

## FROM THE EXECUTIVE OFFICER

---

It is my pleasure to provide the Annual Report to you for the year 2012-2013. This has been a year when we have again built on developing strengths and sought new ways to meet, as a peak organisation: the peak objectives as defined by the Department of Family and Community Services, Ageing, Disability and Home Care; objectives defined by PDCN's Constitution; the Strategic Plan developed for 2011-2015; and also with consideration of the United Nations Convention on the Rights of Persons with Disabilities (UNCRPD).

### Some initiatives from the 2012-2013 year include:

- Working collaboratively with others to bring a stronger message to stakeholders and the broader community about specific issues impacting negatively on the lives of people with disability. An example is the publication *More Power to You: electricity and people with physical disability*.
- Greater involvement of volunteers, and the use of their particular skills to progress the work of PDCN. An example is the use of members who have formal educational qualifications (eg Certificate IV in Training and Assessment) and who also have physical disability, facilitate education sessions as part of the organisation's community development initiatives. Their professionalism and the standard of the work they have contributed has certainly enhanced the reputation of the organisation, and we thank them for their time, effort, enthusiasm, and professionalism.
- Working with other like minded organisations to provide a strong leadership role in promoting the positive value of individuals with disability having choice and control over their own lives. This occurred in relation to the NSW Stronger Together initiative, the National Disability Insurance Scheme (NDIS), and in the development of a disability support organisation in the Hunter area (an initiative possible through a Practical Design Fund grant from the Australian Department of Families, Housing, Community Services and Indigenous Affairs).
- Work of PDCN continues to be informed by people with disability from around NSW. During the 2012-2013 year there has been an increase in the number of ways PDCN has received input into the work of the organisation. These include: organised focus groups to assist in informing public policy review (eg people with physical disability and hospitalisation); conducted statewide surveys (eg transport); by targeted telephone surveys (eg use of smartphones), and community consultation is now also available by survey as well as face to face consultations.
- PDCN's capacity to attract funds to the organisation has enriched the work of PDCN as a peak organisation (eg development and facilitation of education materials with Alzheimer's NSW targeting people who work with individuals who have physical disability and dementia).
- The focus on continuous improvement during the year resulted in the introduction in April 2013 of a feedback form which is currently available as an electronic questionnaire.. This provides an opportunity for individuals who have contact with PDCN to provide us with valuable information about the effectiveness with which PDCN performs its roles. Feedback received in 2012-2013 indicates that, of the individuals who provided feedback, 33.3% rated their interactions with PDCN as good, and 66.7% rated their interactions as very good.



Thank you to the members of the Committee of Management for their work in the governance of the Physical Disability Council of NSW and for the time and effort they give to this vital role. Thank you to the employees, volunteers and contractors who continue to assist in putting into action the PDCN vision through their skill, commitment, and plain old-fashioned hard work.

---

**RUTH ROBINSON** - Executive Officer

# OBJECT 1

One of the objects of The Physical Disability Council of NSW (as identified in its Constitution) is to educate, inform and assist people with physical disabilities in NSW regarding the range of services, structures and programs available that enable their full participation, equality of opportunity and equality of citizenship. During 2012-2013 PDCN has continued to use a number of tools and strategies in relation to this objective.

## E-BULLETINS

This is a resource and information service through which PDCN provides accurate, up-to-date, and timely information, comment and analysis on disability related issues. It is also a tool to seek comment from people with disabilities to inform the work of PDCN. During the last year, 7 e-bulletins were sent. They included information about workshops, community consultations and Forum conducted by PDCN; information about and promoting opportunities to provide input into government initiatives (NSW Disability Services Act Review, and My Choice Matters: NSW Consumer Development Fund). Also included were issues impacting on people with physical disabilities including the effect increasing electricity prices for people with physical disability and person centred supports and services within the community sector.

## EXPOS

PDCN provides information to people with physical disabilities by participating in Expos, by speaking with and providing information to people, and by distributing PDCN information bags. The info bags contained copies of newsletters, publications, and brochures about the work of PDCN. During 2012-2013 PDCN participated in Expos at Penrith, Sydney Central Railway Station, Cardiff, Newcastle and Rose Hill.



## INFORMATION SERVICE (Fig. 1)

During the 2012-2013 year PDCN provided an information service to people who contacted us. The requests were received by telephone, email and fax. The service operates from Monday to Friday, during business hours. The requests received from the Information Service during the year are reflected in Figure 1.

## FACEBOOK (Fig. 2)

In February 2010 PDCN launched its Facebook page. A Facebook presence has enabled the organisation to reach a broader group of people. PDCN's Facebook page contains information about workshops, community consultations, specific-issue consultations, and provides opportunities for interaction via discussion/comments. It continues to be predominately women who access the site, and During 2012-2013 the posted items that received the greatest reach reflect the broad interest areas of people who access the facebook site. The post with greatest reach was about the Living My Way framework: Transition to the NDIS. The second was the Murrays Coaches discrimination case, and thirdly, a production casting call for a person with a disability for an acting role in a movie. The post with greatest virality was about younger people with disability living in nursing homes.

## NEWSLETTERS

During the year PDCN prepared and distributed four newsletters PDCN Live to its membership via email and post. Each newsletter focused on a particular theme. They were: housing, education, person centred supports, and informing the work of PDCN. The newsletters were also made available on the PDCN website, distributed when PDCN gave presentations, and included in Information Bags at Expos and community consultations.

## TWITTER

PDCN commenced a Twitter presence in May 2011, and it has been a valuable addition to the various ways PDCN is able to provide information. The number of followers has increased 332% during this financial year.

## WEBSITE (Fig. 3)

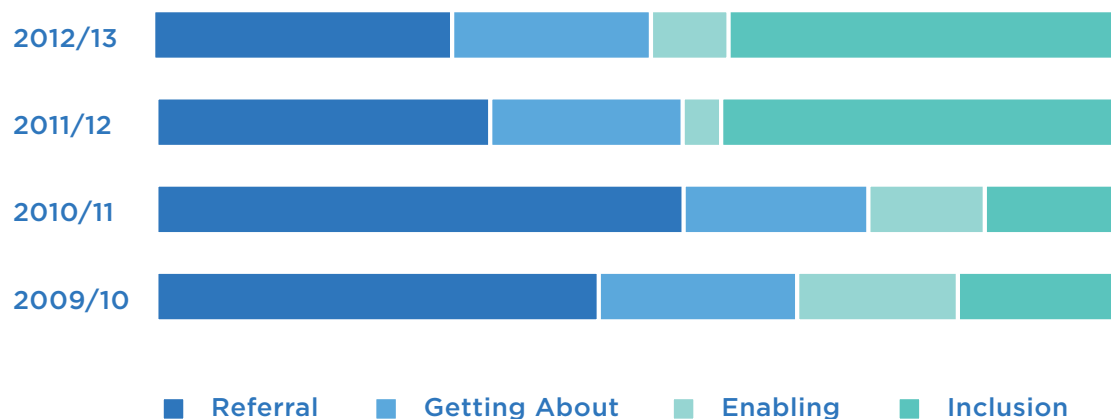
The Website is an important tool of the organisation, and has W3C ranking for disability (as identified under the Web Content Accessibility Guidelines).

The Website contains information about services, structures and programs available and provides an opportunity for contribution to the work of PDCN via electronic surveys. The Website includes an education section for students and holds copies of materials prepared by PDCN including submissions and newsletters. During 2012-2013, within the publications section, the area most visited was for the PDCN newsletter PDCN Live, and the most frequently areas in the online guide were for transport.



(Figure 1)

## INFORMATION SERVICE



(Figure 2)

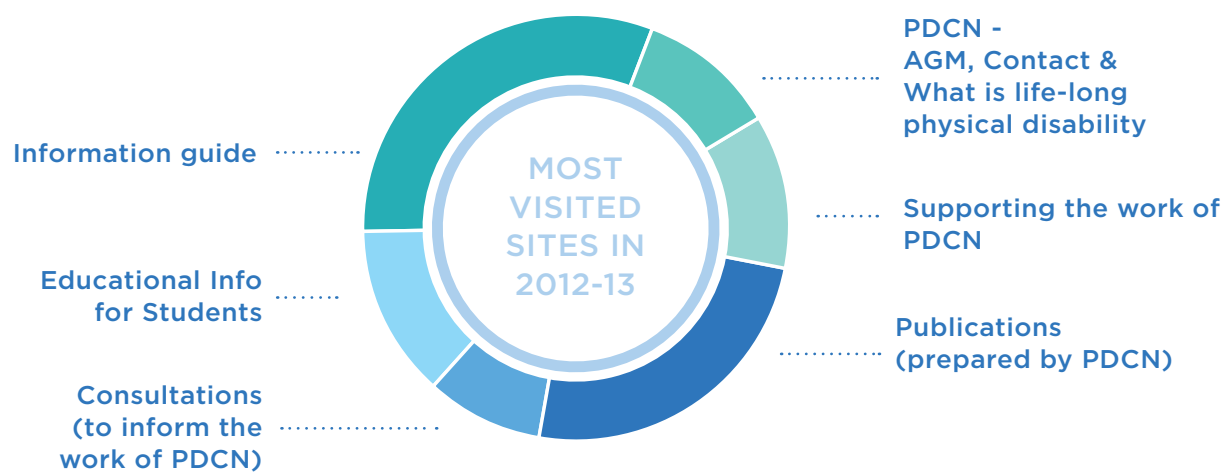
## FACEBOOK

### ACTIVITY ON THE PDCN FACEBOOK PAGE



(Figure 3)

## WEBSITE ACTIVITY



# OBJECT 2

To develop the capacity of people with physical disability in nsw to advocate for themselves.

## CONSULTING WITH PEOPLE WITH PHYSICAL DISABILITY

The strategies PDCN used in 2012-2013 to ensure that the work of the organisation was informed by current state-wide information included: community consultations; specific issue consultations; and the PDCN Forum of Organisations.

### Community Consultations

Each year PDCN conducts a number of Community Consultations in metropolitan, rural and regional New South Wales to help inform the work of the organisation. These are attended by people with a physical disability, providers of services, local government representatives and elected officials. Each consultation provides PDCN with valuable insight into the issues concerning people with physical disabilities in each of the geographic areas.

During the 2012-2013 financial year Community Consultations were held in Taree and Port Macquarie, and an electronic community consultation survey tool was developed, and accessible via the PDCN website. From the website consultation tool information has been provided about the Newcastle and Macarthur areas.

### Specific Issue Consultations

To ensure the input provided by PDCN to government and other stakeholders was informed by people with physical disability from across New South Wales, Specific Issue Consultations were conducted using a number of different avenues including: newsletters; e-bulletins, surveys, expo bags, targeted conversations with members, PDCN email discussion group and facilitated consultations by telephone conference link-up. Examples include boarding houses, employment, polling places at the local government elections, and transport.

### Forum of Organisations

PDCN holds two Forum each year with its organisational members. The purpose of these Forum is to provide a vehicle for PDCN to seek input from organisational members on issues relevant to PDCN (including a transport consultation), and to explore opportunities for joint partnerships and possibilities for collaborative work. For example, person centred supports and individualised funding, and a campaign about accessible transport called All Aboard.

## WORKSHOPS:

### 'Getting Ready'

As part of the Physical Disability Council's policy to develop the individual capacities of people with physical disabilities, a workshop was developed in 2008-2009 through the collaborative skills of PDCN employees who have a lived experience of physical disability, and PDCN members who have particular skills in education development. The workshop developed was known as *'Defining Pathways'*. At least one of the facilitators at each workshop has a physical disability.

The focus of the workshop is individual empowerment, person centred planning, and mainstreaming. The workshop is designed to provide people with physical disability with the skills and strategies to achieve personal goals. The workshops provide opportunities for individuals to identify and focus on issues which are important to them and to assist them in defining skills they may need in developing strategies as they work towards attaining a specific goal. The workshop gives time for personal reflection and provides support and the opportunity to celebrate success as they achieve their objectives. This process fosters greater self awareness and confidence in participants.

Evaluations were completed by participants at the conclusion of each Workshop. Evaluations indicated that: the majority believed the Workshop was relevant to their needs; they had identified a goal that was important to them; and had developed a pathway to achieve their goal. Follow-up evaluations occurred with each participant some four months after they had completed the Workshop which indicated all participants had found their confidence and knowledge had increased as a result of the workshops. All participants also felt more able to make decisions about their own lives and felt they had more control over their own lives.

It is clear that this workshop has utility for individuals to develop preparatory skills prior to implementation of individualised funding and person centred supports. The workshop previously called *Defining Pathways* is also known as *Getting Ready*.

### ‘Emergency Readiness And Response’

A workshop (developed and delivered with funding received from NRMA in previous financial years) was nominated for an award in the *NSW Disability Industry Innovation Awards: recognising excellence in the sector*. PDCN was a finalist in the category “*Innovation in Independent Living Award*”.

The aim of the educational program was to increase the capacity of people with a physical disability in NSW to identify their own risks in an emergency situation, and develop a plan to manage those risks in an emergency/disaster. The workshop was developed by people with physical disability, and at least one of the facilitators at each workshop has physical disability.

The workshop focuses on: increasing participant’s awareness of their needs in an emergency/disaster situation; how participant’s can, through proactive planning ensure that their emergency/disaster needs are met; how participants can raise awareness and make the community safer as a whole; and encouragement for participants to formulate an individual emergency plan.

Participant evaluations were conducted and all participants: stated that the workshop content was relevant to their needs; reported they felt better able to prepare for an emergency situation; stated they had developed a plan, so that if implemented, they would be better prepared for an emergency.

### ‘Supported Living Fund’

The Supported Living Fund is a state government initiative. Its objective is to give people with disability and their families and carers a truly flexible and person-centred option in the planning of ongoing living supports. What this looks like and how it is achieved will reflect the aspirations of the individual and their network of support.

During 2012-2013 PDCN was contracted, by Carers NSW, to facilitate two session sessions within workshops Carers NSW conducted about the Supported Living Fund. The sessions PDCN developed and facilitated were for people with disability, and focused on decision making.

### ‘Mentors Matter’

PDCN conducts a program *Mentors Matter: Young adults with physical disability mentoring high school students with physical disability*. PDCN conducted this program again in this financial year. An interview article about the program appeared in the Paraquid Magazine in 2012.

PDCN sought out people who had physical disability, who it believed had the skills and attributes to be mentors. Individual characteristics sought included: had a physical disability; aged 20-40; completed at least one tertiary qualification; was employed. The program was advertised through individual high schools, radio, PDCN’s social media and newsletters, the Department of Education, Catholic Schools Offices and the Independent Schools Association.

The mentoring sessions were developed in a way that reflected the individual requirements of participants. Feedback received from students, mentors and people significant to the students has been extremely positive, and it is clear that the mentoring program continues to make a difference to students in terms of their short term goals and longer term aspirations.



## OBJECT 3

One of the objects of The Physical Disability Council of NSW (as identified in its Constitution) is to educate and inform stakeholders about the needs of people with physical disabilities so they are able to achieve and maintain full participation, equality of opportunity and equality of citizenship.

### During 2012-2013, PDCN has used a number of strategies in relation to this objective:

- PDCN built on previous work and sought equitable outcomes for people with physical disability through research participation, working collaboratively with like-minded individuals and organisations, participating in advisory committees and working parties, attending forums, giving presentations and participating in interviews.
- PDCN continued to provide input into the considerations, policy and legislative developments at local, state and Commonwealth Government levels, and to service providers in New South Wales. As discussed in the previous section of this report, the input that PDCN provides in this area as is informed by advice from our membership.
- PDCN developed working relationships with service providers, community organisations and peak organisations to develop initiatives, programs and strategies that positively impact on services and supports available for people with physical disability.



Panel presentation: Lara Friedman, Christine Regan, the Hon Andrew Constance MP (Minister for Ageing, and Minister for Disability Services), Ann-Mason Furrage



## ACCESS TO THE BUILT ENVIRONMENT

Access to the built environment refers to all man-made physical components of human settlements such as buildings, streets, open spaces and infrastructure, and telecommunications particularly in terms of whether it promotes or discourages physical activity/access.

PDCN believes that is essential for everyone to be able to access the physical environment in order to participate and be included members of the community. PDCN in 2012-2013 used various strategies to work in this area, including:

### **Forming alliances with other organisations/groups/allies to promote accessible built environments, through:**

- Australian Network on Universal Housing Design
- Home Modification Information Clearinghouse
- Local Government and Shires Associations: Planning for people with disability within the community strategic plan.
- Survey: use of smart phones: On behalf of City of Sydney: developing an accessibility app
- The Great Tribal Chase (New Beginnings Aust): input regarding accessible checkpoints and participant tasks
- Housing issues were the theme of one of PDCN Live newsletters.

### **Participating in Forums, consultations and meetings to champion the development of accessible built environments, including:**

- Willoughby City Council Access Committee
- Marrickville Town Council Access Committee
- Sydney Town Hall: entrance access
- Community Garden Glebe: meeting about plan and access.
- Consultation: Public Domain Access Pilot City of Sydney Council
- Developed survey re experiences at Local Government elections
- Provided feedback to NSW Ombudsman about housing
- NSW Planning and Infrastructure: consulted re review of the *State Environmental Planning Policy (Housing for Seniors or People with a Disability)*
- Meeting with Law Access regarding accessibility of the information they provide
- Provided Comments on the Draft Disability Action Plan for the NSW Information and Privacy Commission.

### **Preparing the following submissions and reports:**

- *Legible Sydney, Wayfinding Strategy*: prepared for The City of Sydney
- *Proposed Exemptions to Development Controls* – NSW Planning
- *New Planning System in NSW* : Prepared for Planning NSW
- *Draft Metropolitan Strategy for Sydney*: Prepared for Planning NSW
- *Review of the Draft Boarding House Regulations 2013*: Prepared for the for the NSW Department of Family and Community Services Ageing, Disability and Home Care

## Somewhere to Sit

The Physical Disability Council launched 'Somewhere to Sit' as part of a Liveable Communities Panel Presentation in October 2010. The focus of Somewhere to Sit is to create inclusive local communities through the availability of public seating (both indoor and outdoor). The initiative encourages individuals to consider how lack of somewhere to sit affects them and others in their community. Seating is one small way a community can become more accessible and inclusive for all. It is one way to address the isolation that comes with reduced mobility, allowing people to continue to enjoy being part of their community by contributing to it. In 2012-2013 PDCN has continued to promote more inclusive communities through this initiative.

## Telecommunications

PDCN's Communication and Education Officer continued his appointment to the Australian Communications Consumer Action Network (ACCAN) on the The Standing Advisory Committee on Disability Issues (SACDI). This is a forum to help ACCAN identify consumer communications issues for people with disabilities. During 2012-2013 PDCN was also represented at the Telecommunications Conference.

## EDUCATION AND EMPLOYMENT

Education and employment refers to equitable opportunities for personal, social and academic growth and development, and sets the stage for later life experiences, most especially in employment.

PDCN believes that students with disability must be provided with opportunities to realise their potential through participation in education and training. It is through education and training that opportunities for employment occur, and employment is a key to an independent life.

PDCN contributed to the area of education and employment during 2012-2013 by : preparing a submission for the Commonwealth Department of Education Employment and Workplace Relations enquiry *Improving the Employment Participation of people with disability in Australia*; by providing material/ information for inclusion in the *Girl Guides: Inclusion Resource*; by making education the theme of one of PDCN's four newsletters produced during the year; by conducting the Mentors Matter program; and through community education.

## Mentors Matter

For some high school students with physical disability it can be difficult to: recognise their own attributes and skills; see academic opportunities and future employment opportunities; or identify people who can be role models. In response to this education/employment gap PDCN has, since 2012 developed and conducted a program *Mentors Matter: Young adults with physical disability mentoring high school students with physical disability*. Additional information about the program is available earlier in this report on page 11.

## OBJECT 3

### Continued

#### Community Education

PDCN understands that learning communities exist where there is a community of common purpose. This organisation has been proactive in building on the synergies of individuals in common locations, or with common interests, as we work towards sharing understandings, skills and knowledge. Resources are used to educate and inform stakeholders about the needs of people with physical disabilities to promote full participation, equality of opportunity and equality of citizenship. Activity in 2012-2013 included:

##### Words Matter Language Guide

*Words Matter* was originally developed in the 2006-2007 year and PDCN found it attracted a much wider readership than was originally envisaged, in myriad organisations working with or focused upon people who have disability, as well as organisations which simply wish to use appropriate language to and about persons with disability. The third edition was produced by PDCN and launched on International Day of People with Disability in December 2010.

The authors of this resource are people who have disability; however, while reviewing this publication, the Physical Disability Council of NSW has sought and integrated the advice of industry professionals and experts in ethics. *Words Matter* is available on the PDCN website, distributed at Expos and community consultations, and 'reference print quality' copies are available from the PDCN office.

##### Working with People who have Dementia and Physical Disability

The life expectancy of people with disability has increased dramatically. The associated incidence of dementia, an age related illness, has increased for the population of people with disability. During 2010-2011 PDCN was involved in the development of a training package known as Working with People who have Dementia and Physical Disability. In the first half of 2012 the package was redeveloped and co-facilitated with Alzheimer's NSW, at four locations in NSW. 100% of participants felt they had acquired new knowledge they would be able to apply to their work. Comments included becoming more person centred, using appropriate language, and providing a holistic approach to planning.

##### RailCorp Education

During 2012-2013 PDCN concluded a long-term education initiative with RailCorp, by providing twice-weekly presentations to their employees who work on trains and stations.

##### Word Matters Workshop

PDCN developed the *Words Matters* Workshop which explored with participants: an understanding of physical disability and the diversity and definition of physical disability; the characteristics of medical and social models of disability; key political and historical movements that have influenced perceptions of disability; how stigma and stereotyping may affect people with a disability, and perceptions of disability generally. The workshop provided

an opportunity for individuals to explore some of their own preconceived ideas and assumptions about disability, consider their own practice and identify key strategies for themselves.

During 2012-2013 *Word Matters Workshops* were conducted for volunteers, and for employees of the Willoughby Council. Participant evaluation immediately after the education session indicated that: most believed they had learnt things that they would be able to apply in their work and over 80% of participants identified specific changes they would make to their work practices.

#### FINANCIAL HEALTH

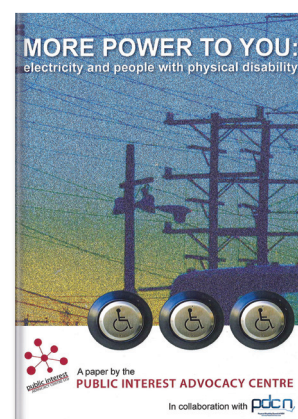
Financial health, a term used to describe whether a person's actual or potential financial resources are adequate to meet costs associated with: housing, motor vehicle acquisition, modification and maintenance, medical treatment and health fund coverage, personal care, the purchase and associated costs of assistive aids and equipment, support services, clothing, leisure and retirement. PDCN continued to represent the interests of people with physical disability by participation in the *Fair Go for Pensioners Alliance*.

##### Electricity Prices

As reported in last year's Annual Report PDCN has been aware of the significant impact on many groups in the community of increasing electricity prices. PDCN understands that many with a physical disability, on fixed incomes, are significantly disadvantaged by large rises in energy prices. PDCN has strengthened our collaborative work with other organisations on this issue.

In 2011 PDCN and the Public Interest Advocacy Centre (PIAC) Energy and Water Consumers Advocacy Program spoke to a group of people with physical disability about their energy use. People told us they were concerned about rising electricity costs. In some cases these concerns were especially strong because their physical conditions meant that they relied heavily on electricity to help them with the essentials of daily life. In 2011, PDCN and PIAC jointly conducted a state-wide survey on the impact of electricity costs for people with physical disability, and in 2012-2013 PIAC published the paper *More Power to You: electricity and people with physical disability*.

The survey findings, and publication continue to inform PDCN's work to bring about change to support the needs people living with physical disability. This publication has provided a tool to continue to raise this issue. PDCN is a member of the Public Interest Advocacy Centre (PIAC,) Energy + Water Consumer Advocacy



Program: Reference group, and has included information about energy included in one of the PDCN newsletters. PDCN also prepared a submission *Senate Inquiry – Electricity Prices for the Commonwealth Government*.

## HEALTH AND WELLBEING

The health and wellbeing of people with physical disability is impacted by many factors, and in 2012-2013 PDCN has involved itself in some of those areas. In particular, the impact of ageing and people with physical disability, the importance of assistive devices and equipment, and in community education. Each of these areas is discussed within this section of the Report.

PDCN has also worked to inform discussion and consideration in other health and wellbeing areas where it was important to ensure that the informed opinions of people with physical disability were considered:

### Access to medical services

- South Eastern Sydney Division of General Practice: Network of Community Services and Non Government Agencies
- Eastern Sydney Medicare Local – Strategic Planning Forum

### Impacting health policy

- Health NSW, NGO Reference Committee: appointed member
- Health Peaks Advisory Group (facilitated by Council of Social Service of NSW).
- Focus group for NSW Health: *hospitalisation and disability policy*

### Accessing support at home

- Home and Community Care Peaks Forum: Participant
- Attendant Care Industry Association (ACIA), Quality Steering Committee: Member
- Lifetime Care and Support Authority- Reference Group member.

## Ageing and people with physical disability

During 2011 PDCN used a state-wide survey to consult on the Impact of Ageing on People with Physical Disability. The aim of this survey was to better understand the everyday lives of people living in NSW with a physical disability, who are aged over 50 years. The data gathered through the research survey was collated and a comparative analysis undertaken of both the 2008/9 and 2011 results. A paper was developed based on these findings.

This report is available on the PDCN website and the Minister for Disability Services distributed copies to Ministers in the NSW Parliament. The survey findings inform PDCN's work to bring about change to support the needs of older people living with a physical disability. PDCN has continued to work during 2012-2013 to ensure that the concerns/issues of people with physical disability are considered during all

of their lives. This is achieved by continuing to highlight concerns of people with physical disability who are ageing, by providing input in discussion.

In 2012-2013 PDCN also prepared the submission *Living Longer Living Better: Aged Care Reform in Action*, for the Commonwealth Department of Health and Ageing, and participated in an evaluation of the *Carers Action Plan: interim report*.

## Assistive Devices and Equipment

Assistive devices and equipment are terms for any device or system that allows individuals to perform tasks they would otherwise be unable to do, or increases the ease and safety with which tasks can be performed. PDCN takes the position that all people with physical disability must be provided with the essential aids and equipment they need to achieve a quality standard of living which facilitates maximum participation within their community.

In NSW the *Program of Appliances for Disabled People (PADP)* was established to assist people who have a life-long or long-term disability to live and participate in their community by providing equipment, aids and appliances. In recent years the program has been centralised under EnableNSW.

PDCN has proactively worked for the reform of PADP since 1999 and each year since then the PDCN Annual Report has highlighted this organisation's work in relation to this. In 2012-2013 PDCN continued its involvement in the Assistive Technology Community Alliance of NSW (previously known as the *PADP Community Alliance*). The Alliance works for improvements to the provision of supportive equipment and assistive technology as a basic right of people with disability, and in 2012-2013 provided feedback to the NSW Ombudsman about EnableNSW.

## INDIVIDUALISED SUPPORT

Human rights refer to the legal recognition of the inherent value, dignity and equality of all people. PDCN has continued to advocate actively on issues regarding human rights. PDCN has been represented in discussions, consultations, representation on Boards, preparation of submissions and involvement in campaigns. The involvement of PDCN in 2012-2013 has focused on inclusion, individualised support, choice and control for people with physical disability (discussed later in this section) and also included:

### Value of people with physical disability

- Forum of Non-government agencies (engagement with the government sub-committee)
- Representative on Board of Association for Children with a Disability in NSW

### Rights of people with disability

- Submission *Reducing the Risk of Restrictive Practices in the Disability Service Sector*: Prepared for the Department of Families, Housing, Community Services and Indigenous Affairs



## OBJECT 3

### Continued

#### Equity for people with physical disability

- New South Wales Advocacy Network: member
- NSW Disability Network Forum: member
- Attended a Forum of Organisations working group developing a charter for the community sector
- NSW Ombudsman Disability Roundtable quarterly meetings
- Working Party on materials related to Social Inclusion (NCOSS)
- Submission *Creative City: Cultural Policy Discussion Paper for The City of Sydney*.

Since late 2008 PDCN has worked for individualised support, self-directed funding, and choice and control for people with physical disability. This involvement has included: participation in reforms to services in the home and community sector through IMPACT; support for the National Disability Insurance Scheme, promoting the Every Australian Counts campaign; participating in collaborative work as part of In-Control; and involvement in forum, research, and preparing submissions. During 2012-2013 PDCN's involvement in each of these are collaborative work includes:

- Legislative Assembly Committee on Community Services *Outsourcing Community Service Delivery*: submission
- Attendant Care Industry Association, Quality Steering Committee: member
- Research on the Need for Two Care Workers in a Community Setting: Steering Committee: member
- Submission on the *Policy for Attendant Care and High Needs Pool*, prepared for NSW Department of Family and Community Services, Ageing, Disability and Home Care.

#### Having an IMPACT

PDCN has been an active participant in the work of the NSW IMPACT Forum, which was the inspiration behind The Better Practice Project (BPP) for Home and Community Care (HACC) in NSW. In 2012-2013 PDCN has continued to further develop and maintain a website ([www.impactnsw.com](http://www.impactnsw.com)) to:

- Continue to support change to think differently... from within services, organisations, and by people within the broader community
- Capture what is happening in the wider aged and community care sector (including those under the age of 65)
- Provide links to person centred, strengths based, enabling initiatives, papers, projects, training materials, and tools that are available

#### National Disability Insurance Scheme (NDIS)

Over the past year PDCN has continued to contribute extensively to this national campaign for personalised planning and self-directed funding mechanisms. PDCN provided support to the *Every Australian Counts Campaign* by: giving presentations about the NDIS; participated in forum about NDIS; and promoting activities/events/initiatives on the PDCN website and facebook. PDCN also prepared submission, and provided input into submission prepared by networks:

- *National Disability Insurance Scheme Bill 2012*: Submission to Parliament of the Commonwealth Government of Australia - House of Representatives
- Provided input to the NSW Disability Network Forum Submission to the *Discussion Paper on the National Disability Insurance Scheme (NDIS) Rules*: Prepared for the NDIS Select Council on Disability Reform
- Provided input to NSW Disability Forum Position Paper - *NDIS Eligibility Reasonable Support*: Prepared for the NDIS Select Council on Disability Reform

#### Stronger Together 2

Stronger Together is the Government's plan to deliver better supports for people with disability in NSW, and includes a commitment to introduce a person centred approach in which the person with disability is supported to become the primary decision maker about his/her own support needs. PDCN in 2012-2013 has contributed in the following ways:

- Prepared submission *Review of the Draft Service Charter*: for the NSW Department of Family and Community Services Ageing, Disability and Home Care
- Prepared submission *NSW Disability Services Act Review*: for the NSW Department of Family and Community Services Ageing, Disability and Home Care
- Provided input to *NSW Disability Network Forum Position Paper - Ability Links NSW Taskforce*
- *Consumer Development Fund*: provided input to promotional materials
- Prepared submission *Living Life My Way Discussion Paper* for the NSW Department of Family and Community Services Ageing, Disability and Home Care
- Participated in *Living Life My Way- Person Centred Approach* – consumer consultations
- Conducted a Panel Presentation: Finally it's all about me: "*Individualised funding and person centred supports for people with physical disability*" was held before the AGM in October 2012. The panel included The Hon Andrew Constance MP Minister for Ageing, and Minister for Disability Services; Christine Regan NSW Council for Social Service); and Lara Friedman who gave a personal Perspective.



## In Control

In Control Australia is a collaboration between a number of individuals and agencies around Australia. The common use of the term signals a shared interest in the rights of people living with disability, the importance of such people being at the centre of decision making about their lives and the importance of supporting people into valued roles as citizens.

In NSW, a collective of individuals has been meeting since 2010. This includes representatives from PDCN, and the NSW focus is on stimulating systemic policy change to enable people with disability and their families to direct their supports and to advance and uphold the rights of people with disability. During 2012-2013 the main focus of In Control has provided a response to the *NSW Government Second Round of consultations on the Living Life My Way*.

## Disability Support Organisation: Hunter Project

The DSO Hunter Project was independently managed by the PDCN and Family Advocacy on behalf of In Control NSW. It was funded by a grant from the Commonwealth Government Department of Families, Housing, Community Services and Indigenous Affairs.

The aim of the project was to work to establish a Disability Support Organisation in the Hunter, the launch site for the National Disability Insurance Scheme (NDIS) in NSW. A user led Disability Support Organisation (Community Disability Alliance Hunter) run by and for people with disability and their families, with the aim of assisting people to get the support they need to live the lives they choose. They are an independent, collective voice committed to full inclusion and active citizenship.

As part of the Project a resource was developed *Establishing a user led Disability Support Organisation -from idea to realisation*. The aim of this resource is to provide some information and assistance to other groups of people with disability, families and allies who also want to make sure that the opportunities suggested in the Productivity Commission's report into Disability Care and Support will be delivered to people with disability and their families.

## TRANSPORT

Transport relates to access to private transport (own vehicles), public and privately operated public transport (rail, taxi, busses, ferries, light rail, planes), and community transport.

PDCN understands that people with physical disability have comparatively high difficulty in accessing transport and support services, which has a significant impact on the capacity of a person with disability to participate in employment, education and social activities, thus demonstrating the compounding effect of disability. PDCN in 2012-2013 has promoted the advantages to the whole community when transport can be used by everyone. We have focused on the following areas:

### Wheelchair accessible taxis.

- Wheelchair Accessible Taxi (WATS): Stakeholder meetings
- IPART: Annual Taxi Fare Review of Sydney Taxi Licences: prepared for the Independent Pricing and Regulatory Tribunal
- Initiated research and provided input with a number of other non- government organisations into the publication *Report on a Survey of NSW Taxi Transport Subsidy Scheme Users* (prepared by Northern Rivers Social Development Council)

### Mobility parking for cars

- Mobility Parking Scheme (MPS) Consultation (individual)
- Review of the NSW Mobility Parking Scheme – service provider consultation

### Rail

- RailCorp: Stakeholder Forum
- Education with RailCorp Train Crew and Station staff
- Promoted Artarmon Rail Station petition: for an accessible station

### Road

- *2013 Staysafe* (Joint Standing Committee on Road Safety): submission prepared for the Parliament of NSW

### Transport

- Transport for NSW, Transport Advisory Committee: member
- NCOSS. Transport Policy Advisory Group member
- Transport for NSW, stakeholder engagement workshop re walking and cycling customer research project
- Transport Forum at Parliament House
- *Disability Standards for Accessible Public Transport*: submission prepared for Commonwealth Department of Infrastructure and Transport
- *Draft Disability Action Plan 2012-2017*: submission prepared for Transport for NSW
- Transport NSW: *Long Term Master Plan*, prepared for Transport for NSW
- Appearance before *Joint Parliamentary Inquiry into Regional Transport*

# GOVERNANCE

## ORGANISATION PROFILE

The Committee of Management consists of a group of individuals with skills and experience complementary to good governance. The 2012-2013 committee members have accounting, business, management, community development, education, psychology and legal skills. This skill set and experience has enabled them to provide enthusiastic and professional governance to the organisation during the year. Biographical information about each of the current members of the Committee of Management follows within this report.

To maintain the Committee of Management's currency within this not for profit Organisation, PDCN provides a training session once a year for all committee members. During 2012-2013 the newly appointed President also attended a two day workshop about good governance in the not for profit sector. The Committee of Management has, during this financial year:

- Reviewed a large number of the existing policies associated with good governance.
- Conducted a comprehensive risk assessment for the organisation (which is conducted annually), and initiated change as a result of that review.

- Conducted a self evaluation on the effectiveness of the committee of management, and initiated changes as a result of that review.

- Monitored the work of the organisation through monthly reports provided by the Executive Officer. The reports identify the work PDCN has been involved in during the previous month. Each item identified is identified within the context of: the objective of the Constitution to which it relates; the area of peak organisation required activity to which it relates; and the element of the strategic plan to which it relates.

- Reviewed progress reports identifying the organisation's implementation progress in relation to the organisation's Strategic Plan 2011-2016 were also received and reviewed twice during the financial year. A summary of the strategic initiatives identified in the plan are available on PDCN's website.

- Held ten Meetings of the Committee of Management during the financial year. Individual attendance at Meetings is identified in the following table:

### SUMMARY OF COMMITTEE OF MANAGEMENT INDIVIDUAL ATTENDANCES

#### KEVIN FINLAYSON

9 (of 10)

#### ANDREW LONGHURST

7 (of 10)

#### PETER SIMPSON

7 (of 10)

#### ANN-MASON FURMAGE

8 (of 10)

#### YA'EL FRISCH

7 (of 10)

#### CAROLINE DALEY

9 (of 10)

#### MELINDA PATERSON

appointed to committee  
in april 2013

3 (of 03)

#### JENNY KAPP

did not nominate for  
election at AGM in 2012

3 (of 03)



**KEVIN FINLAYSON**  
President

Kevin was born with Multiplex Congenita, in Armidale in 1952. He has worked for Australia Post and Telstra. Kevin moved from Sydney to Yamba where he was involved in access issues and successfully lobbied the local council in Maclean Council for, access ramps and a wheelchair mooring to fish from. Kevin returned to Sydney in 1999. Kevin joined Penrith Disability Resource Centre Inc and held several positions (Information Officer, Fundraising, and Chairperson, Secretary, and Committee member). He raised access and equity issues for people with a disability, and in July 2006, Penrith City Council acknowledged his work in the local community by recognising him on the Wall of Achievement within the Council. Kevin has previously been involved in a number of other organisations including: Penrith City Council Access committee, Sports Council of NSW, Penrith Disability Action Forum (PDAF), taking on such issues as wheelchair access for Penrith Plaza, lifts for Penrith Railway Station, Hoyts access, MLAC keys for accessible toilets, laybacks in pedestrian footpaths in Penrith LGA. Kevin has completed courses relating to disability advocacy, and access auditing at TAFE, and has presented disability awareness training within schools. Kevin's current roles are Vice President of Police Citizens Youth Club, and the Public Officer for the committee of management of PDCN.



**ANDREW LONGHURST**  
Vice President

Andrew Longhurst has Osteogenesis Imperfecta (OI or Brittle Bones) and he uses a manual wheelchair for mobility. Andrew is currently Vice President of the PDCN Management Committee.

Andrew works part time as a Community Worker with the Adult Outreach Team at Northcott Disability Services. The Adult Outreach team is a multi-disciplined team which assists Adult Clients with primarily physical disabilities to pursue goals they have for their life. He also works part time for TAFE NSW. In the past he has worked in the Open Employment sector with people who have acquired disabilities and for DADHC with people who have intellectual disabilities.

He has a Bachelor of Social Science (Psychology) and a Graduate Diploma in Counselling from Charles Sturt University in Bathurst, as well as a Certificate IV in Assessment and Workplace Training.

Andrew is also a current co-vice president of the OI Society of Australia.



**PETER SIMPSON**  
Secretary

Peter A Simpson has a physical disability and is currently the Secretary of the PDCN Committee of Management.

Peter's main area of interest is issues associated with access to the built environment. He has also been involved in wheelchair sports, where he competed in wheelchair rugby for over 12 years. Throughout his life Peter has advocated on various issues on behalf of people with disabilities, from built environment issues, transport, to participation in sport/recreation.

Sitting on various community/access committees, Peter loves being able to contribute his knowledge/experience to help facilitate changes in policy and organisational development.

Peter has previously served as a Director of Wheelchair Sports NSW.



**ANN-MASON FURMAGE**  
Treasurer

Ann-Mason was born and grew up in the United States of America. In 1950, she contracted polio, which caused paralysis of her left hand, arm and shoulder. In 1959, she had a radical mastoidectomy of her right ear and has been hearing-impaired since that time.

In 1968, Ann-Mason migrated to Australia. She attended the West Australian Institute of Technology (now John Curtin University) where she attained her Bachelor of Business in Accounting in 1980. She became a Certified Practising Accountant (CPA) in 1983. Ann-Mason has been an accountant or financial controller for a number of organisations in Australia and the United States.

In 1996, physical problems associated with the late effects of polio resulted in Ann-Mason leaving full-time employment, although she continued working on a part-time basis until 2000. Ann-Mason now uses a motorised wheelchair. She currently serves as Treasurer of the Physical Disability Council of NSW and is a member of: the Board of Directors of the Independent Living Centre of NSW; the External Advisory Committee to the Department of Occupational Therapy at the University of Sydney; the Community Advisory Committee of Royal Prince Alfred Hospital, the Sydney Local Health District Disability and Carers Committee, and the Access Committee of the Town of Marrickville.



**YA'EL FRISCH**  
Member

Ya'el is a young lawyer who uses a wheelchair. She has a passion for social justice and inclusion and spends her life challenging the societal barriers which form the worst part of her disability.

After two great years working in policy in Canberra, Ya'el once again calls Sydney home and has a new appreciation of its accessible taxis. She looks forward to a national system so that all Australians with disability can access the support they need to live the life they want, no matter where they live.

Ya'el is a self-confessed coffee addict, and loves live music and hanging with friends. She is also on the Boards of the Australian Centre for Disability Law and the Disability Council of NSW, and contributes to ABC RampUp.





**CAROLINE DALEY**  
Member

Caroline is the mother of two school-aged children.

Caroline's daughter, who has cerebral palsy requiring the use of a powerchair and communication device, attends their local high school with the assistance of a full-time teachers' aide. When she finishes school her current goals are to become a published author and to compete for Australia in the Paralympic sport of boccia.

During their 10 years living in a rural NSW town, Caroline and her husband owner-built a wheelchair accessible home.

Moving to Newcastle at the end of 2009, Caroline and her family are enjoying the coastal lifestyle with long walks along the harbour and beachfronts.

Caroline has a Bachelor of Business, worked as a training designer and developer for nearly 5 years, and is currently an Active After School Communities Coach introducing boccia to school-aged children who may not otherwise have the opportunity to be involved in sport.

Surviving on caffeine, Caroline allocates her time between boccia, helping out at her childrens' schools, programming her daughters communication device, and making the most of the beautiful walks around Newcastle.



**MELINDA PATERSON**  
Member

Melinda Paterson has been a community development worker with the Home and Community Care (HACC) Program since 1998, utilising her skills in research, policy analysis and journalism and public relations gained through her BA (Communications) degree. She is also has a physical disability and uses a wheelchair.

Following a short stint in the Club industry, Melinda travelled around NSW as a project officer in 1996/97, consulting with young people about their experiences of HACC and providing self-advocacy training. She has maintained this commitment to consumer rights and empowerment through her current role, which gives her many opportunities to comment on draft policy and legislation in the redevelopment of disability and aged care service systems. She is an active member of the Community Care Advisory Committee of Aged & Community Services NSW (ACS), the NSW IMPACT Working Group to develop enablement in HACC and the Minister's Advisory Committee for My Choice Matters – the Consumer Development Fund.

Melinda manages a small not-for-profit organisation in Sutherland Shire and is a self-proclaimed training junkie, having completed several TAFE courses and certificates in management, advocacy and case management.

# APPENDIX A

## Convention on the Rights of Persons with Disabilities (CRPD)

To ensure the rights of people with disability are realised, the Convention on the Rights of Persons with Disabilities (CRPD) was adopted in December 2006 at the United Nations Headquarters and was opened for signature on 30 March 2007. There were 82 signatories of the convention on that day, including Australia.

A principal role of the CRPD is to demonstrate how traditional rights are to be applied in respect of people with disability. Australia ratified the Convention in July 2008 and has therefore joined other countries around the world in a global effort to promote the equal and active participation of all people with disability in society and community life. These are identified in the Articles of the Convention.

The work of PDCN in 2012-2013 has contributed to this work and responsibility, within the objects of PDCN's Constitution, including.

### Object 1:

To educate, inform and assist people with physical disabilities in NSW about the range of services, structures and programs available.

Article 9: Accessibility	Article 21: Freedom of expression and opinion, and access to information
-----------------------------	--

### Object 2:

To develop the capacity of people with physical disability in NSW to advocate for themselves

Article 11: Situations of risk and humanitarian emergencies	Article 21: Freedom of expression and opinion	Article 24: Education
---	--	--------------------------

### Object 3:

To educate and inform stakeholders about the needs of people with physical disabilities

Article 8: Awareness-raising	Article 9: Accessibility	Article 19: Living independently and being included in the community	Article 20: Personal mobility
Article 21: Freedom of expression and opinion, and access to information	Article 24: Education	Article 25: Health	Article 26: Habilitation and rehabilitation
Article 27: Work and employment	Article 28: Adequate standard of living and social protection	Article 30: Participation in cultural life, recreation, leisure and sport	

# APPENDIX B

## FINANCIAL REPORTS

ABN: 26 858 845 702

### INCOME AND EXPENDITURE STATEMENT FOR THE YEAR ENDED 30th JUNE 2013

	2013 \$	2012 \$
<b>PROFIT FROM ORDINARY ACTIVITIES BEFORE INCOME TAX</b>	2,742	5,214
Income tax expense attributable to operating profit	-	-
<b>PROFIT FROM ORDINARY ACTIVITIES AFTER INCOME TAX</b>	2,742	5,214
Retained profits (Accumulated losses) at the beginning of the financial year	47,776	42,562
<b>RETAINED PROFITS (ACCUMULATED LOSSES) AT THE END OF THE FINANCIAL YEAR</b>	50,518	47,776

### BALANCE SHEET AS AT 30th JUNE 2013

	NOTE	2013 \$	2012 \$
<b>CURRENT ASSETS</b>			
Cash and cash equivalents	2	105,561	61,378
Trade and other receivables	3	3,885	3,865
Other Assets	4	12,029	16,726
<b>TOTAL CURRENT ASSETS</b>		121,475	81,969
<b>NON-CURRENT ASSETS</b>			
Property, plant and equipment	5	5,481	11,165
<b>TOTAL NON-CURRENT ASSETS</b>		5,481	11,165
<b>TOTAL ASSETS</b>		126,956	93,134
<b>CURRENT LIABILITIES</b>			
Trade and other payables	6	47,696	26,186
Provisions	7	20,756	16,637
<b>TOTAL CURRENT LIABILITIES</b>		68,452	42,823
<b>NON-CURRENT LIABILITIES</b>			
Provisions	7	7,986	2,535
<b>TOTAL NON-CURRENT LIABILITIES</b>		7,986	2,535
<b>TOTAL LIABILITIES</b>		76,438	45,358
<b>NET ASSETS</b>		50,518	47,776
<b>MEMBERS' FUNDS</b>			
Retained profits		50,518	47,776
		50,518	47,776

**NOTES TO THE FINANCIAL STATEMENTS**  
FOR THE YEAR ENDED 30th JUNE 2013

ABN: 26 858 845 702

	2013 \$	2012 \$
<b>1. STATEMENT OF SIGNIFICANT ACCOUNTING POLICIES</b>		
This financial report is a special purpose financial report prepared in order to satisfy the financial reporting requirements of the Associations Incorporation Act 2009 (NSW). The committee has determined that the association is not a reporting entity.		
The financial report is prepared on an accruals basis and is based on historic costs and does not take into account changing money values or, except where specifically stated, current valuations of non-current assets.		
The following material accounting policies, which are consistent with the previous period unless otherwise stated, have been adopted in the preparation of this financial report:		
<b>Income Tax</b>		
The association is exempt from income tax under Subdivision 50-B of the Income Tax Assessment Act 1997.		
<b>Property, Plant and Equipment</b>		
Property, plant and equipment are carried at cost or independent valuation. All assets are depreciated over their useful lives to the association.		
<b>Employee Benefits</b>		
Provision is made for the liability for employee benefits arising from services rendered by employees to the end of the reporting period. Employee benefits have been measured at the amounts expected to be paid when the liability is settled.		
<b>Goods and Services Tax (GST)</b>		
Revenues, expenses and assets are recognised net of the amount of GST, except where the amount of GST is not recoverable from the Australian Taxation Office (ATO).		
Receivables and payables are stated inclusive of the amount of GST receivable or payable. The net amount of GST recoverable from, or payable to, the ATO is included with other receivables or payables in the balance sheet.		
<b>Economic Dependence</b>		
The association is dependent upon the NSW Department of Family & Community Services for the majority of its operating revenue. At the date of this report the department has guaranteed funding up to 30th June 2015 in accordance with its standard 3-year funding agreement.		
<b>2. CASH AND CASH EQUIVALENTS</b>		
St George Bank	-	6,808
Payroll Clearing Account	1,077	-
ING Business Optimiser A/c	65,270	35,582
Westpac Banking Corporation		
Cheque A/c	37,960	17,736
Westpac Banking Corporation		
Reserves A/c	60	58
Westpac Banking Corporation		
Gift Fund A/c	1,194	1,194
	<b>105,561</b>	<b>61,378</b>
<b>3. TRADE AND OTHER RECEIVABLES</b>		
<b>CURRENT</b>		
Trade Debtors	1,840	1,820
Other Debtors	2,045	2,045
	<b>3,885</b>	<b>3,865</b>
<b>4. OTHER CURRENT ASSETS</b>		
<b>CURRENT</b>		
Prepayments	<b>12,029</b>	<b>16,726</b>
<b>5. PROPERTY, PLANT AND EQUIPMENT</b>		
Plant & Equipment	40,412	51,321
Less: Accumulated Depreciation	35,117	40,386
	<u>5,295</u>	<u>10,935</u>
Office Furniture & Equipment	10,009	10,009
Less: Accumulated Depreciation	9,823	9,779
	<u>186</u>	<u>230</u>
<b>Total Property Plant and Equipment</b>	<b>5,481</b>	<b>11,165</b>
<b>6. TRADE AND OTHER PAYABLES</b>		
<b>CURRENT</b>		
PAYG withholding payable	2,711	2,711
Trade Creditors & Accruals	4,818	4,937
Superannuation Payable	-	1,398
Income In Advance	31,671	9,625
GST Payable	8,496	7,515
	<b>47,696</b>	<b>26,186</b>
<b>7. PROVISIONS</b>		
<b>CURRENT</b>		
Provision for Annual Leave	<u>20,756</u>	<u>16,637</u>
<b>NON-CURRENT</b>		
Provision for Long Service Leave:		
Conditional	<u>7,986</u>	<u>2,535</u>

The conditional long service leave provisions relates to employees with between 5 and 10 year's service.



The committee has determined that the association is not a reporting entity and that this special purpose financial report should be prepared in accordance with the accounting policies outlined in Note 1 to the financial statements.

In the opinion of the committee the financial report:

1. Presents fairly the financial position of The Physical Disability Council of NSW Inc. as at 30th June 2013 and its performance for the year ended on that date.
2. At the date of this statement, there are reasonable grounds to believe that the Physical Disability Council of NSW Inc. will be able to pay its debts as and when they fall due.

This statement is made in accordance with a resolution of the Committee and is signed for and on behalf of the Committee by:

President:

*K. T. Farnham*

Secretary

Treasurer:

*P. Kimber*

Dated this *17th* day of September, 2013.

**Report on the financial report.**

I have audited the accompanying financial report, being a special purpose financial report, of The Physical Disability Council of NSW Inc (the association) which comprises the balance sheet as at 30th June 2013, and the income statement for the year then ended, a summary of significant accounting policies, other explanatory notes and the statement by members of the committee.

**The financial report and committee's responsibility.**

The management committee of the association is responsible for the preparation and fair presentation of the financial report and has determined that the accounting policies described in Note 1 to the financial statements, which form part of the financial report, are appropriate to meet the requirements of the Associations Incorporation Act 2009 (NSW) and are appropriate to meet the needs of the members. The committee's responsibility also includes establishing and maintaining internal control relevant to the preparation and fair presentation of the financial report that is free from material misstatement, whether due to fraud or error, selecting and applying appropriate accounting policies, and making accounting estimates that are reasonable in the circumstances.

**Auditor's responsibility**

My responsibility is to express an opinion on the financial report based on my audit. No opinion is expressed as to whether the accounting policies used, as described in Note 1, are appropriate to meet the needs of the members. I conducted my audit in accordance with Australian Auditing Standards. These Auditing Standards require that I comply with relevant ethical requirements relating to audit engagements and plan and perform the audit to obtain reasonable assurance whether the financial report is free from material misstatement.

An audit involves performing procedures to obtain audit evidence about the amounts and disclosures in the financial report. The procedures selected depend upon the auditor's judgement, including the assessment of the risks of material misstatement of the financial report, whether due to fraud or error. In making those risk assessments, the auditor considers internal control relevant to the entity's preparation and fair presentation of the financial report in order to design audit procedures that are appropriate in the circumstances, but not for the purpose of expressing an opinion on the effectiveness of the entity's internal control. An audit also includes evaluating the appropriateness of accounting policies used and the reasonableness of accounting estimates made by the committee, as well as evaluating the overall presentation of the financial report.

The financial report has been prepared for distribution to members for the purpose of fulfilling the committee's financial reporting obligations under the Associations Incorporations Act 2009 (NSW). I disclaim any assumption of responsibility for any reliance on this report or on the financial report to which it relates to any person other than the members, or for any purpose other than that for which it was prepared.

I believe that the audit evidence I have obtained is sufficient and appropriate to provide a basis for my audit opinion.

**Independence**

In conducting my audit, I have complied with the independence requirements of Australian professional ethical pronouncements.

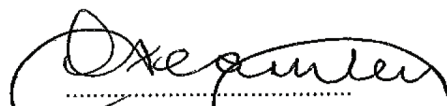
**Audit Opinion**

In my opinion, the financial report of The Physical Disability Council of NSW Inc presents fairly, in all material respects, the financial position of the association as of 30th June 2013 and of its financial performance for the year then ended in accordance with the accounting policies disclosed in Note 1 to the financial statements, and the Associations Incorporation Act 2009 (NSW).

**Basis of Accounting and Restriction on Distribution**

Without modifying my opinion, I draw attention to Note 1 in the financial report, which describes the basis of accounting. The financial report has been prepared to assist the association to meet the requirements of the Associations Incorporation Act 2009 (NSW). As a result, the financial report may not be suitable for another purpose.

**DA Fearnley & Co,  
Chartered Accountant**

  
D.A. Fearnley B.Ec, FCA.

Dated this 17<sup>th</sup> day of September, 2013

30/1-7 Jordan Street  
Gladesville NSW 2111

**DETAILED INCOME AND EXPENDITURE STATEMENT**  
FOR THE YEAR ENDED 30th JUNE 2013

ABN: 26 858 845 702

	<b>2013</b> \$	<b>2012</b> \$
<b>INCOME</b>		
Government Funding:		
ADHC: Recurrent	243,580	236,105
ADHC: Dementia	26,112	-
FaHCSIA: NDIS	83,997	-
ACSA: Impact Website	9,896	2,675
	<b>363,585</b>	<b>238,780</b>
<b>OTHER INCOME</b>		
Workshop Income	22,087	24,608
Community Grants	15,883	12,845
Interest Received	4,626	2,885
Recoveries & Reimbursements	4,093	685
Members' Contributions	3,000	3,286
Profit on Sale of Non-Current Assets	503	-
Donations	5	116
	<b>50,197</b>	<b>44,425</b>
	<b>413,782</b>	<b>283,205</b>
<b>EXPENDITURE</b>		
Advertising	236	676
Annual Leave Provision	4,120	2,646
Auditor's Remuneration	4,200	4,000
Bank Charges	658	1,349
Bookkeeping Fees	1,123	1,555
Computer Expenses	11,449	7,819
Consultancy Fees	11,703	3,010
Committee Expenses	4,883	2,554
Depreciation	4,687	5,039
Grant Expenses	88,889	8,387
Insurance	6,226	7,011
Internet Expenses	913	998
Long Service Leave	5,451	2,535
Permits, Licences & Fees	1,710	467
Postage	2,755	1,204
Printing & Stationary	29,983	4,134
Rent	11,121	13,478
Salaries & Wages	159,325	128,530
Staff Training & Amenities	8,134	617
Strategic Planning	5,189	5,189
Subscriptions	454	335
Superannuation Contributions - Compulsory	6,929	7,882
Superannuation Contributions - Salary Packaged	25,000	49,799
Telephone	3,313	4,128
Temporary Staff	6,378	-
Travelling Expenses	1,124	1,274
Volunteer Expenses	803	1,309
Workshop Expenses	4,284	12,066
	<b>411,040</b>	<b>277,991</b>
<b>Profit from ordinary activities before income tax</b>	<b>2,742</b>	<b>5,214</b>



**Physical Disability Council of NSW**  
Ordinary People Ordinary Lives

St Helen's Community Centre  
3/184 Glebe Point Rd. Glebe 2037

T: (02) 9552 1606  
1800 688 831(freecall outside  
the Sydney metropolitan area)

E: [Admin@pdcnsw.org.au](mailto:Admin@pdcnsw.org.au)

F: (02) 9552 4644

National Relay Service

TTY users:  
1800 555-677 then ask  
for (02) 9552 1606

Speak and Listen users:  
1300 555-727 then ask  
for (02) 9552-1606