

Vol 11, No. 2
September 2008



The PDCN Advocate

INSIDE...

PADP Inquiry	2
Mobility/ Transport	3
Employment	3
Strategic Plan	4

ISSN 1446-9154

Research: Findings to be presented on Wednesday 22nd October

Thank you to all who completed the survey. The results are currently being analysed. As identified in a previous newsletter, the purpose of the survey was to seek feedback to examine the impact of ageing on the needs of people with a disability, focusing on the following key priority areas:

- Personal Assistance;
- Mobility/ Transportation;
- Housing/ Accommodation;
- Social Networks;
- Health and Disability.

PDCN used a number of strategies to seek information from people with disability including: consultations in four regional areas of the state; three consultations in the Sydney area; existing disability networks; and PDCN's membership, Discussion group and Website

PDCN would like to thank the more than 500 respondents who have either completed this survey electronically or as a hard copy.

Currently a Research Assistant is collating and analysing the survey responses.. The findings will then be presented at the AGM on Wednesday the 22nd October at 124 Glebe Point Road, GLEBE (RSVP to 9552 1606)

Seeking your feedback..... **Sept 13. Will your voting venue meet your access needs?**

PDCN has ongoing concerns that not all polling places for elections are accessible for all community members. PDCN has reviewed all of the information provided about polling venues for the Local Government elections on the 13th, and notes that some polling places are identified as being accessible, or partially accessible.

To assist PDCN in advocating for improvement accurate information is essential. Please assist us by completing a short questionnaire. which is enclosed, or available electronically via www.pdcnsw.org.au

The latest info about the elections

The Electoral Officers' Manual has now been amended so that any person with a disability may be accompanied by a carer, and an electoral officer will mark the ballot paper as the person requests. It is claimed that all of this will be done in confidential circumstances.

Inquiry into the Program of Appliances for Dis- abled People – PADP

In June 2008 the NSW Legislative Council sought an inquiry into PADP in response to the many complaints received by community members, and we forwarded the following key recommendations as part of this review:

- Improved consistency and equity of administration and management with the centralization of PADP,
- Greater availability and distribution of information in a variety of formats with the following information - eligibility criteria, the availability of aids and equipment, complaints mechanisms and contact details, and additionally the availability of an 1800 number,
- Removal of the \$100 co-payment for all people using PADP, and
- Increased PADP funding of 24.4 million in the first financial year, followed by an additional 10 million there after.

For your information The Rees Government Ministry

Nathan Rees MP
Premier, and Minister for the Arts

John Hatzistergos MLC
Attorney General, and Minister for Justice

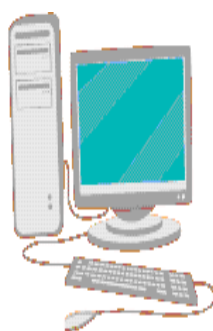
David Campbell MP
Minister for Transport

Verity Firth MP
Minister for Education and Training, and
Minister for Women

Kristina Keneally MP
Minister for Planning, and Minister for Redfern
Waterloo

Paul Lynch MP
Minister for Ageing, Minister for Disability
Services, and Minister for Aboriginal Affairs

David Borger MP
Minister for Housing, and Minister for Western
Sydney



**Are you in NSW and do you have a physical disability?
Do you have access to email?**

Join the PDCN Email Discussion group!

<http://groups.yahoo.com/group/pdcndiscussion/>

Mobility/ Transportation

President on 2GB

2GB 873 Michael Thompson had a query and information request regarding access to Railway stations: Martin Place, Croydon, Burwood, St. James, Museum and Redfern. This resulted in Ann-Mason Furmage being on *Mornings with Chris Smith*.

Research, of government information, by Ann-Mason highlighted that:

- At the rate at which CityRail is making train stations accessible in this financial year (2008-2009), it will be 2033 before all stations are accessible.
- At the rate at which CityRail is planning to make train stations accessible in 2009-2010, it will be 2049 before all stations are accessible.

Employment

Recently PDCN provided comment to the Commonwealth Government regarding recruitment, training and retaining open-employment for people with physical disabilities. More specifically our submission focused on the following issues:

- Legislation- Disability Discrimination Act (Section 23 – Access to Premises and Section 15 – Employment)
- Employment Trends for Commonwealth and NSW State Government Departments
- Skill shortages
- Inability to access Personal Care in Educational and Vocational Settings
- Rehabilitation Programs
- Educational/Training Programs
- Additional costs of Disability

Guards on Trains

PDCN responded to an Independent Pricing and Regulatory Tribunal (IPART) inquiry investigating the financial operations of CityRail. Our submission focused on a IPART proposal to remove all guards from CityRail trains and to limit the number of staff on train stations with a low patronage.

Accessible rail

PDCN provided input regarding accessibility issues to the Australian Rail Track Corporation (ARTC) for major work about to commence in Campbelltown, Liverpool, Fairfield and Bankstown areas (as a result of a freight rail project).

Continuous paths of travel

A submission was forwarded to the Premier's Department concerning the lack of recognition to safe, accessible continuous paths of safe travel throughout the Sydney CBD.

Transport regarding the TTSS

Unfortunately IPART has recently recommended a significant rise in the flag fall for booking a taxi rolled out in July 2008, but as part of this inquiry has recommended the following to the NSW Ministry of Transport:

Recommendation 5: The Government should increase the cap on the TTSS subsidy above the current level of \$30 to take account of increases in taxi fares since the cap was last adjusted.



St Helens Community Centre
184 Glebe Point Rd
Glebe NSW 2037

Telephone (02) 9552-1606

Fax (02) 9552-4644

Freecall 1800 688 831 (outside
the Sydney Metropolitan area)

Email admin@pdcnsw.org.au

Web www.pdcnsw.org.au

**PHYSICAL DISABILITY
COUNCIL OF NSW**

The **Physical Disability Council of NSW Inc (PDCN)** is the peak body in NSW representing people in NSW who experience physical disability.

Our philosophy is people with physical disabilities: ordinary people; ordinary lives.

Our vision is to effect change through collaborative leadership:

Our objectives are:

- To educate, inform and assist people with physical disabilities in NSW regarding the range of services, structures and programs available that enable their full participation, equality of opportunity and equality of citizenship
- To develop the capacity of people with physical disability in NSW to advocate for themselves
- To educate and inform all stakeholders about the needs of people with physical disabilities so they are able to achieve and maintain full participation, equality of opportunity and equality of citizenship.

Membership Online

<http://www.pdcnsw.org.au/about/membership.html>

Strategic Plan for PDCN for 2008-2011

The Management Committee, along with a facilitator, Colin Slattery, from Semann & Slattery, gave a great deal of time and consideration to the development of the Purpose, Vision, Mission, Values and Key Performance Areas for PDCN.

The results of the Management Committee's efforts were presented at the 2007 Annual General Meeting in the form of a consultation with members, to inform further develop the areas of interest and concern for people with physical disabilities.

At the 2008 Annual General Meeting, we will present the Strategic Plan for PDCN which will inform the work of PDCN from 2008-2011.

Seeking your input....

As part of our reform agenda, the priorities identified in the new Strategic Plan 2008-2011, will be reflected in submissions PADP will be preparing shortly. Before submitting these submissions to the Commonwealth Government, we will be seeking your input via PDCN Discussion website:

- Measures to strengthen the financial security of seniors, carers and people with a disability – Commonwealth Department of Families, Housing, Community Services and Indigenous Affairs
- Review of Disability Employment Services – Department of Education, Employment and Workplace Relations